



Natural.  
Paradise

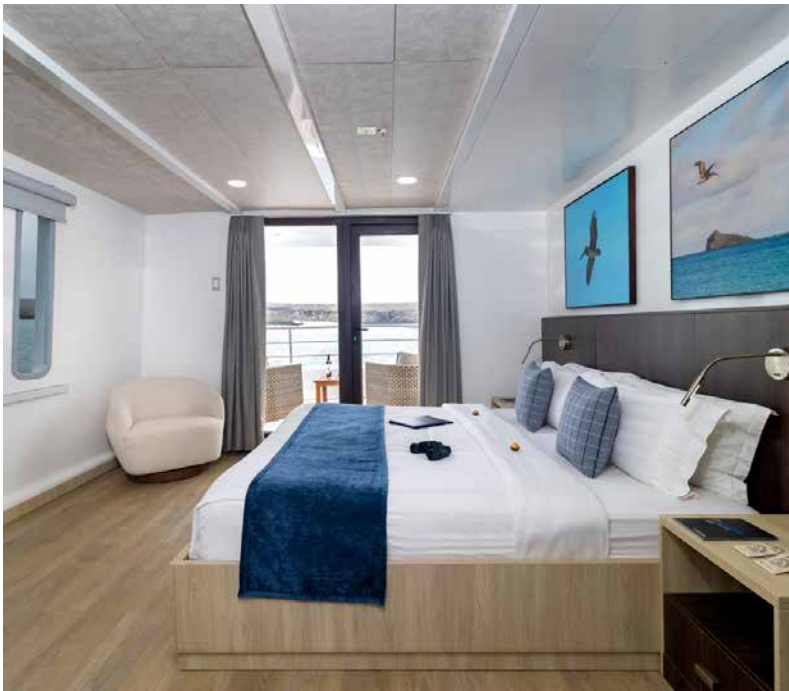
# NATURAL PARADISE LUXURY GALAPAGOS ISLANDS YACHT



The Natural Paradise, built in 2016, is all about elegance and comfort. This luxury yacht offers travelers a variety of accommodation options that suit everyone's needs, while always offering the best quality in overall experience. Ten crew for sixteen passengers means high level service as you cruise the Galapagos while enjoying the sundeck with jacuzzi and cozy al-fresco dining.

- ✓ *Excellent itineraries*
- ✓ *Spacious Sundeck*
- ✓ *Private Balconies*
- ✓ *Large Suites Available*





## UPPER DECK SUITE (x2)

- Area 355 ft<sup>2</sup> / 33 m<sup>2</sup> (including balcony)
- 1 King Size bed
- Panoramic windows
- Private balcony



## MAIN DECK JR. SUITE (x1)

- Area 355 ft<sup>2</sup> / 33 m<sup>2</sup>
- 1 King Size bed + sofa bed
- TV in adjacent room
- Large windows





## UPPER DECK JR. SUITE (x2)

- Area 226 ft<sup>2</sup> / 21 m<sup>2</sup> (including balcony)
- 2 Twin Beds (can be converted into California King Size)
- Large windows
- Private balcony



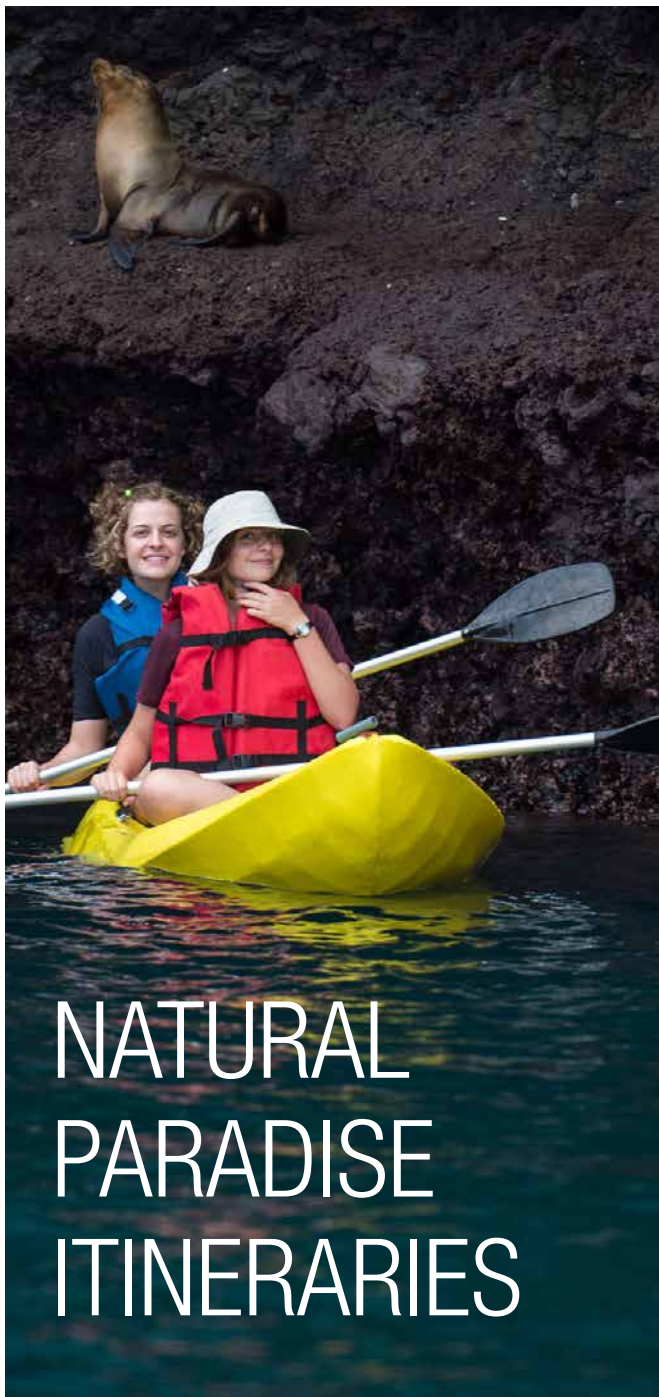
## MAIN DECK STATEROOM (x2)

- Area 172 ft<sup>2</sup> / 16 m<sup>2</sup>
- 2 Twin Beds (can be converted into California King Size)
- Large windows



## LOWER DECK STATEROOM (x2)

- Area 215 ft<sup>2</sup> / 20 m<sup>2</sup>
- 2 Twin Beds (can be converted into California King Size)
- Porthole windows



8 DAY CRUISE (A)		8 DAY CRUISE (B)	
Tue	am pm	am pm	am pm
Wed	am pm	am pm	am pm
Thu	am pm	am pm	am pm
Fri	am pm	am pm	am pm
Sat	am pm	am pm	am pm
Sun	am pm	am pm	am pm
Mon	am pm	am pm	am pm
Tue	am pm	am pm	am pm
Wed	am pm	am pm	am pm
Thu	am pm	am pm	am pm
Fri	am pm	am pm	am pm
Sat	am pm	am pm	am pm
Sun	am pm	am pm	am pm
Mon	am pm	am pm	am pm
Tue	am pm	am pm	am pm

5 DAY CRUISE

4 DAY CRUISE

8 DAY CRUISE (B)

8 DAY CRUISE (A)

8 DAY CRUISE (B)

Arrival to San Cristobal Airport: Transfer to boat  
San Cristobal: Kicker Rock / Witch Hill

North Seymour Island  
South Plaza Island

Rabida Island  
Bartholomew Island

Santiago Island: Sullivan Bay  
Santa Cruz: Dragon Hill

Santa Cruz: Twin Craters  
Santa Cruz: Highlands / Tortoise Breeding Center

Genovesa: El Barranco  
Genovesa: Darwin Bay

Santiago: Espumilla Beach / Buccaneer Cove  
Santiago: Egas Port

Santa Cruz: Bachas Beach  
Santa Cruz: Eden Islet

Isabela: Vicente Roca Point  
Fernandina: Espinosa Point

Isabela: Urbina Bay  
Isabela: Moreno Point

Isabela: Sierra Negra Volcano  
Isabela: Wetlands / Tortoise Breeding Center

Chinese Hat  
Mosquera Islet

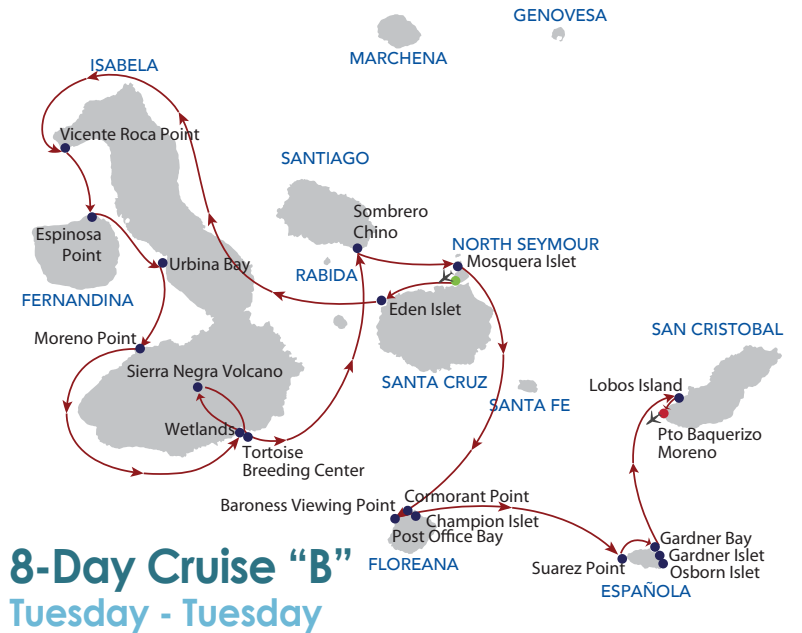
Floreana: Baroness Viewing Point/Post Office Bay  
Floreana: Cormorant Point / Champion Islet

Española: Suarez Point  
Española: Gardner Bay/Gardner Islet/Osborn Islet

San Cristobal: Lobos Island  
Transfer to the San Cristobal Airport



**8-Day Cruise "A"**  
Tuesday - Tuesday



**8-Day Cruise "B"**  
Tuesday - Tuesday



**5-Day Cruise**  
Tuesday - Saturday



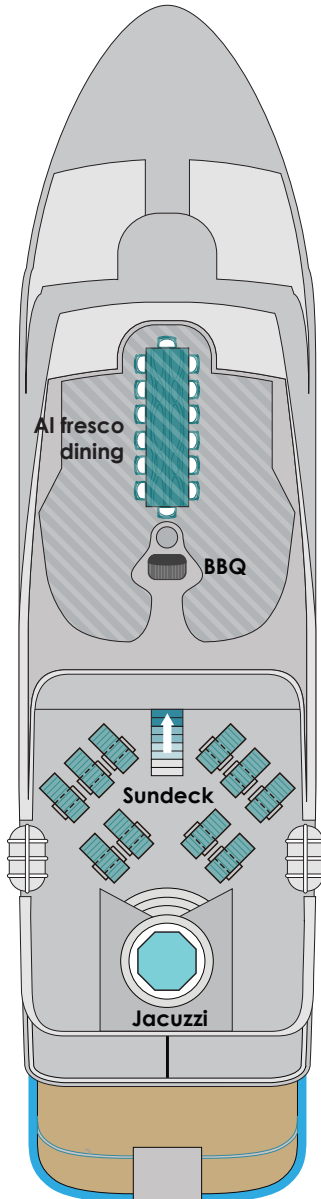
**4-Day Cruise**  
Saturday - Tuesday

● Arrival ● Visitor Site ● Departure ✈️ Airport

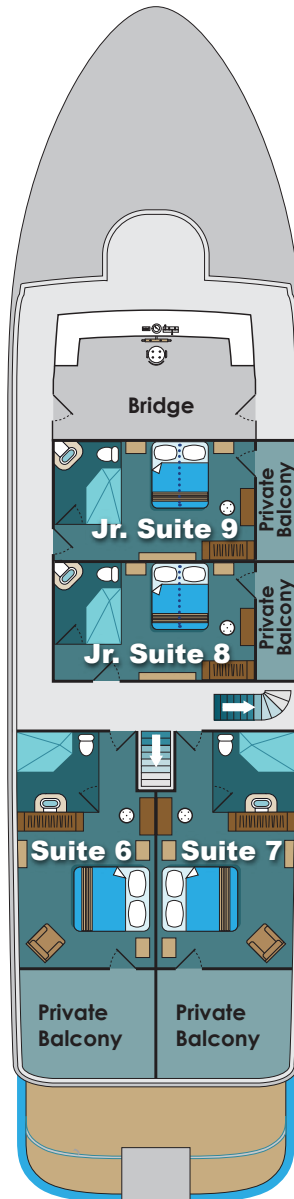
\*Itineraries subject to change without previous notice.

# NATURAL PARADISE DECKPLANS

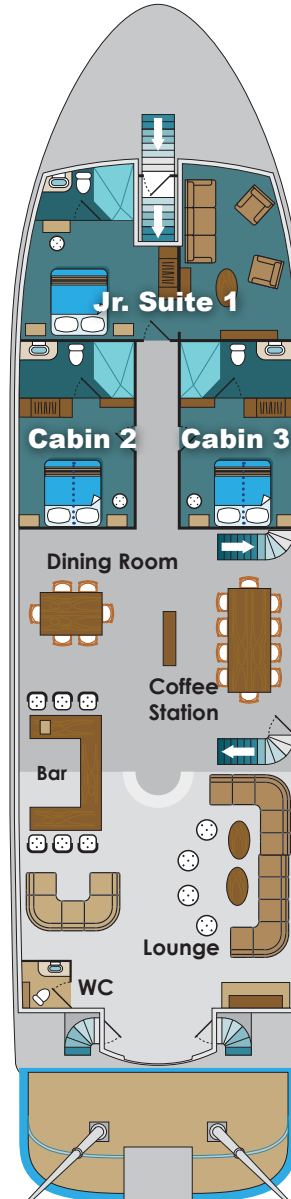
SUNDECK



UPPER DECK



MAIN DECK



LOWER DECK



 Escape routes are posted in each cabin. Please take the time to review these carefully.

# NATURAL PARADISE YACHT TECHNICAL SPECIFICATIONS

<b>CONSTRUCTION</b>	2016
<b>LENGTH</b>	111 feet / 34 meters
<b>BEAM</b>	26 feet / 8 meters
<b>DRAFT</b>	4 feet / 1.40 meters
<b>SPEED</b>	14 knots
<b>CAPACITY</b>	16 passengers
<b>MAIN ENGINES</b>	Cummins - 2 X 400 HP
<b>GROSS TONNAGE</b>	145 Tons
<b>EXTERIOR</b>	GFRP (fiber reinforced polymer)
<b>GENERATORS</b>	2 X 50 Kw
<b>CREW</b>	9 members +1 Cruise Director +1 Guide

- ACCOMMODATION**
- **Upper Deck:** 4 double cabins with private balcony
  - **Main Deck:** Dining room, bar, social area, 3 double cabins
  - **Lower Deck:** 2 double cabins

\*All cabins with private bathrooms, hot water and air-conditioning

## SAFETY & NAVIGATION

- FURUNO Radar
- GPS
- Depth sounders
- ACR radio
- VHF - DSS radio
- ABC Fire Extinguishers
- All required navigation equipment







 Natural  
Paradise

[www.naturalparadise-cruise.com](http://www.naturalparadise-cruise.com)